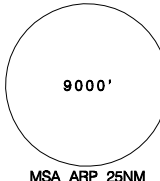
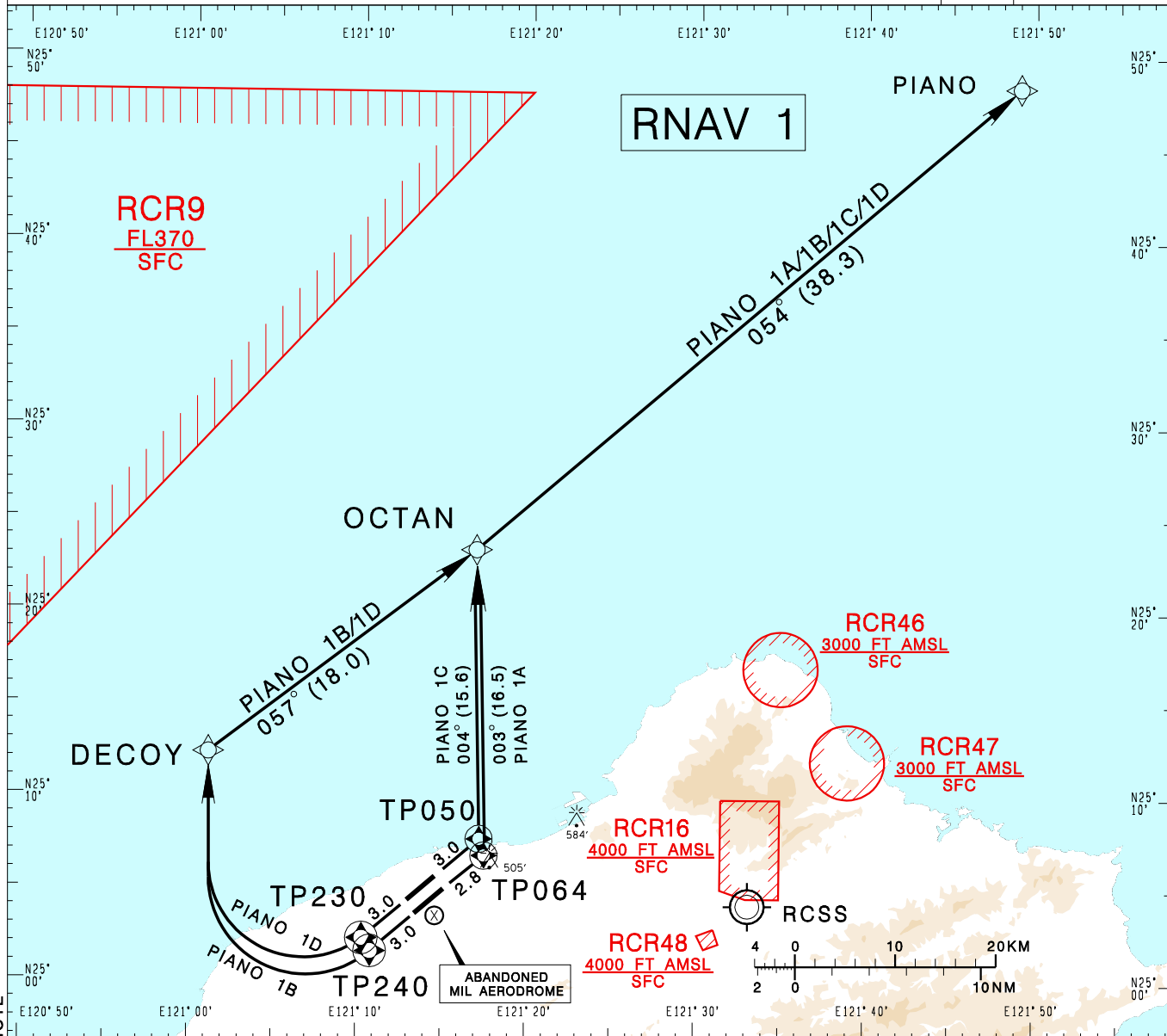


臺灣桃園國際機場
TAIPEI/TAIWAN TAOYUAN INTL AD

RCTP SID
PIANO 1A RNAV(RWY05R)/PIANO 1C RNAV(RWY05L)
PIANO 1B RNAV(RWY23L)/PIANO 1D RNAV(RWY23R)

TAIPEI APP 125.1 128.5	TAIPEI TWR 118.7 129.3	ATIS 127.6	VAR 5° W 
Apt Elev: 108'	Trans Level: FL130	Trans Alt: 11,000'	
BEARINGS ARE MAGNETIC; DISTANCES ARE NAUTICAL MILES; ELEVATIONS, HEIGHTS IN FEET			



CHANGES: RCR49 COMPLETELY WITHDRAWN; NOTE

PIANO ONE ALFA RNAV DEPARTURE
Climb on RWY HDG until leaving 600ft, then direct to TP064, OCTAN, PIANO.

PIANO ONE CHALI RNAV DEPARTURE
Climb on RWY HDG until leaving 600ft, then direct to TP050, OCTAN, PIANO.

PIANO ONE BRAVO RNAV DEPARTURE
Climb on RWY HDG until leaving 600ft, then direct to TP240, DECOY, OCTAN, PIANO.
Cross OCTAN at or above 8000ft.

PIANO ONE DELTA RNAV DEPARTURE
Climb on RWY HDG until leaving 600ft, then direct to TP230, DECOY, OCTAN, PIANO.
Cross OCTAN at or above 8000ft.

NOTE

1. RWY 23R/23L: speed restriction of 210KT IAS maximum until established on track to DECOY.
2. Minimum climb gradients required:
RWY 05L: 4.1%(250 ft/NM) until TP050
RWY 05R: 4.7%(286 ft/NM) until OCTAN
RWY 23L: 3.4%(210 ft/NM) until TP240
3. ATS surveillance required.